

Cadillac

DISCOVER THE
NEXT-GENERATION 2021

ESCALADE

ARRIVING LATE 2020



THE SPOTLIGHT IS YOURS

Only the 2021 Cadillac Escalade brings you industry firsts in technology, obsessive design and human-focused features that transform the road into your red carpet.



PREMIUM LUXURY PLATINUM

SPORT

Preproduction model shown throughout. Actual production model may vary. Available late 2020.

BREAKTHROUGH FEATURES



BE SEEN

SWEEPING OLED DISPLAY

- Industry's first-ever curved OLED display
- Offers more than 38" diagonal of total display
- More than twice the pixel density of a 4K TV
- The largest color range in the industry
- Bold imagery, high contrast and perfect blacks



BE HEARD

AKG® AUDIO SYSTEM

- Exclusive technology from AKG,¹ leaders in professional audio equipment
- Available Studio Reference system with 36 speakers² at varying heights
 - Offers 360-degree sound immersion
 - Front passenger volume control
 - Conversation Enhancement



BE MOVED

AVAILABLE SUPER CRUISE™

- World's first true hands-free driver assistance feature³ for compatible highways
- **New for Super Cruise:** Lane change on demand when turn signal is engaged

¹ AKG is a trademark of AKG Acoustics GmbH, registered in the United States and/or other countries.

² Standard on Platinum trim level and optional on Premium Luxury and Sport trim levels.

³ Even while using the Super Cruise driver assistance feature, always pay attention while driving and do not use a hand-held device. Visit cadillacsupercruise.com for compatible highways and more information. Requires active OnStar plan, active WiFi Hotspot, working electrical system, cell reception and GPS signal.



TECHNOLOGY

YOU RUN THE SHOW

From the driver-centric curvature of the OLED display to immersive 360-degree audio, impeccably integrated technology puts you center stage.



The OLED infotainment¹ and instrument panel works like your smartphone—a configurable interface with touch and swipe interaction.

Second-row passengers get first-class amenities. Available Rear Seat Entertainment includes first-in-class 12.6" HD displays.



Technology goes beyond screens. Available soft-close doors, cabin air ionizer and available console refrigerator make your drive as impressive as your arrival.



1 Functionality varies by model. Full functionality requires compatible Bluetooth® and smartphone, and USB connectivity for some devices.

INTERIOR

ENDLESSLY CAPTIVATING

An inviting interior that feels invite-only. Escalade is brimming with luxurious materials, stunning craftsmanship and design firsts.



Obsession with detail is evident every place you look—from a variety of custom woods to intricate stitching throughout.



Choose from several interior personas, each with well-appointed details such as fabric inspired by the Escala concept vehicle.



Elegantly lit, inside and out. A crest on the OLED display illuminates as you approach the vehicle while interior ambient lighting elevates the atmosphere.

EXTERIOR

A COMMANDING PRESENCE

Powerful styling stops people in their tracks. Make your entrance known with Escalade's signature exterior design features:

- Three distinctly bold grilles
- Full LED horizontal headlights
- Dramatic 3-foot taillamps
- Standard 22-inch wheels
- Signature Cadillac LED blade daytime running lights
- Design cues from Cadillac Escala concept vehicle

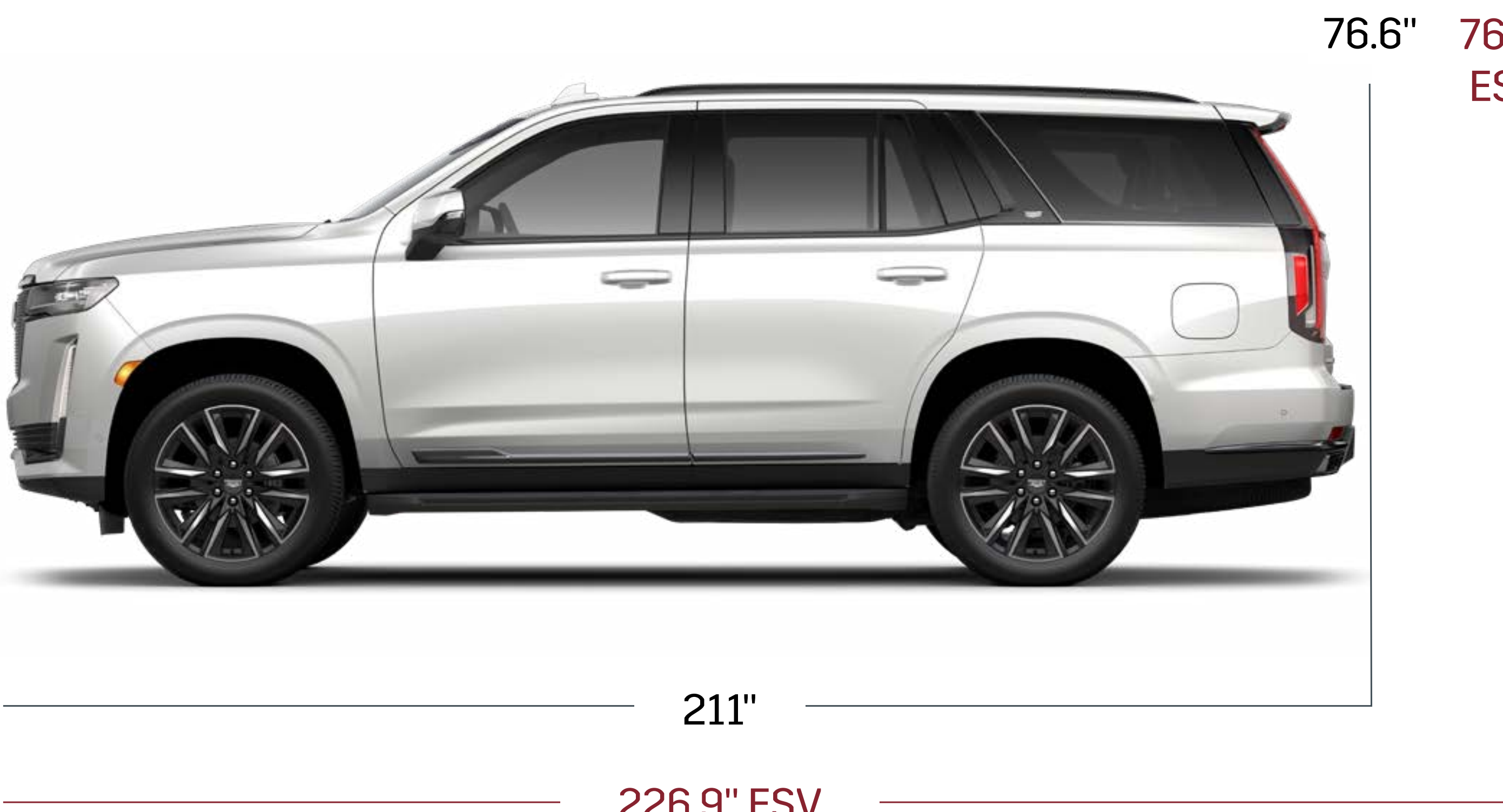




SPECS

DETAILS AT A GLANCE

- Standard 6.2L V8 engine and available 3.0L Diesel
- 420 HP and 460 lb.-ft. of torque with 6.2L V8 engine
- 10-speed transmission
- *Available* Air Ride Adaptive Suspension
- *Available* Electronic Limited Slip Differential
- New Dynamic Fuel Management software that deactivates individual cylinders for efficiency



MORE SPACE THAN EVER

Escalade’s new independent rear suspension grants the cabin next-level spaciousness—so get comfortable.

- 10.4 additional inches of third-row leg room¹
- Second and third row seats fold to create nearly flat load floor
- ESV best-in-class cargo room behind first, second and third rows
- Up to 142.8 max cubic feet of cargo room in ESV²
- Sliding second-row seating to accommodate passengers and cargo

¹ Compared to the previous generation short-wheel-base Escalade.
² With rear seats folded down. Cargo and load capacity limited by weight and distribution.



SAFETY & DRIVER ASSISTANCE FEATURES

FOCUS ON THE DESTINATION

An advanced suite of standard and available driver assistance features help keep your eyes on the road.

VISIBILITY

- HD Surround Vision Camera¹
- *Available* full-color Head-Up Display
- *Available* Night Vision System¹
- *Available* Rear Camera Mirror¹

DRIVER ASSISTANCE

- *Available* Super Cruise™² with Lane Change
- Augmented Reality Navigation³
- Enhanced Automatic Parking Assist¹

ALERTS

- Front Pedestrian Braking¹
- Automatic Emergency Braking¹
- Safety Alert Seat¹
- *Available* Lane Change Alert with Side Blind Zone Alert¹
- *Available* Lane Keep Assist with Lane Departure Warning¹

FEATURED PACKAGE

PERFORMANCE PACKAGE

Includes Electronic Limited Slip Differential, Magnetic Ride Control and Trailering Integration Package (featuring Trailer Cameras, Integrated Brake Controller, Hitch Guidance with Hitch View,¹ Trailering App,⁴ Trailer Side Blind Zone Alert¹ and Theft Alert)

¹ Read the vehicle Owner's Manual for more important feature limitations and information.

² Even while using the Super Cruise driver assistance feature, always pay attention while driving and do not use a hand-held device. Visit cadillacsupercruise.com for compatible highways and more information. Requires active OnStar plan, active WiFi Hotspot, working electrical system, cell reception and GPS signal.

³ Map coverage available in the United States, Puerto Rico and Canada.

⁴ Device data connection required. Available on select Apple and Android devices. Some features require active service plan and working electrical system. Service availability, features and functionality vary by vehicle. User terms and limitations apply.

BOLDLY DESIGNED, ALL YOURS

You know luxury is getting exactly what you want. That's why Escalade offers five distinct trims, each expressive in its own way.

LUXURY

- Curved OLED screens with 38" diagonal of total display
- 6.2L V8 engine with Dynamic Fuel Management
- AKG 19-speaker Studio Sound System
- 22" 14-Spoke Alloy Wheels with Bright Silver Finish
- HD Surround Vision¹
- *Available* Duramax 3.0L Turbo Diesel engine

PREMIUM LUXURY *(INCLUDES LUXURY CONTENT +)*

- Panoramic sunroof
- Rear Camera Mirror¹ with Remote Wash
- Full-color Head-Up Display¹
- 22" 14-Spoke Alloy Wheel with Polished Finish
- Driver Awareness Plus¹ including Rear Cross Traffic Alert, Lane Change Alert with Side Blind Zone Alert, Lane Keep Assist with Lane Departure Warning
- Automatic Parking Assist with Braking
- *Available* Super Cruise™ ² driver assistance feature

SPORT *(INCLUDES PREMIUM LUXURY CONTENT +)*

- Intricate Sport Mesh Gloss-Black grille
- 22" 12-Spoke Polished Alloy Wheels with Dark Android Finish
- Performance Package including Electronic Limited Slip Differential, Magnetic Ride Control, Trailering Integration Package
- *Available* Air Ride Adaptive Suspension with Drive Modes

PREMIUM LUXURY PLATINUM AND SPORT PLATINUM

(INCLUDES LUXURY, PREMIUM LUXURY, DRIVER ASSIST & TECH PACKAGE CONTENT +)

- Leather-wrapped instrument cluster, console and upper door panels
- 18-way front seats with heat/vent and massage feature
- Unique Platinum wheel and grille in Premium Luxury Platinum trim
- AKG® Studio Reference 36-speaker system²
- Rear Seat Entertainment
- *Available* Console Refrigerator with Freezer Mode

¹ Safety or driver assistance features are no substitute for the driver's responsibility to operate the vehicle in a safe manner. The driver should remain attentive to traffic, surroundings and road conditions at all times. Visibility, weather and road conditions may affect feature performance. Read the vehicle Owner's Manual for more important feature limitations and information.

² Even while using the Super Cruise driver assistance feature, always pay attention while driving and do not use a hand-held device. Visit cadillacsupercruise.com for compatible highways and more information. Requires active OnStar plan, active WiFi Hotspot, working electrical system, cell reception and GPS signal.

³ AKG is a trademark of AKG Acoustics GmbH, registered in the United States and/or other countries.



TRIM PERSONAS

YOUR OWN PERSONAL FASHION SHOW

Purposeful design, obsessive detail and remarkable craftsmanship. All are present in Escalade’s uniquely curated personas. Which one are you?

LUXURY

JET BLACK



Linear
Tiger wood

PREMIUM LUXURY PLATINUM & SPORT PLATINUM

JET BLACK



Natural Figured
Ash wood



Mondrian
quilted seating

JET BLACK / BITTERSWEET



Bitter
Lace wood



Mondrian
quilted seating

GIDEON / WHISPER BEIGE



Linear
Marquetry wood



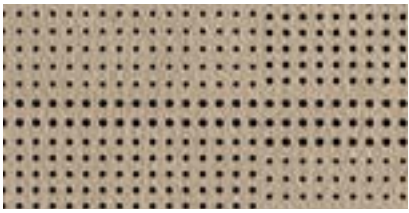
Mini Chevron
perforated seating

SPORT

JET BLACK / WHISPER BEIGE



Zebra wood



Precision
perforated seating

DARK BRANDY



Fine Line
Brandy wood



Faceted
quilted seating

PREMIUM LUXURY

JET BLACK



Linear
Tiger wood



Precision
perforated seating

JET BLACK / PARCHMENT



Parchment Tamo
Ash wood



Mini Chevron
perforated seating



COLORS & WHEELS

MAKE YOUR STATEMENT

Choose from 8 premium exterior paints, available in both Escalade and ESV.

EXTERIOR COLORS

- 


Black Raven
- 

Dark Shadow Metallic¹
- 

Satin Steel Metallic¹
- 

Sandstone Metallic¹
- 


Crystal White Tricoat¹
- 

Dark Mocha Metallic¹
- 

Infrared Tintcoat¹
- 

Dark Moon Blue Metallic¹


WHEELS

- 


LUXURY

22” 14-Spoke Alloy with Bright Silver Finish
- 


PREMIUM LUXURY


22” 14-Spoke Alloy with Polished Finish
- 


SPORT & SPORT PLATINUM

22” 12-Spoke Polished Alloy with Dark Android Finish
- 

PLATINUM

22” 10-Spoke Polished Alloy with Dark Android Finish & Laser Etching
- 

22” Multi-Spoke Polished and Dark Android finishes¹
- 

22” 12-Spoke Chrome finish¹
- 

22” 12-Spoke High Gloss Black finish¹
- AVAILABLE ON ALL TRIMS

¹ Available at extra cost.



THANK YOU FOR YOUR INTEREST

Follow the links below to experience the interactive Visualizer tool or subscribe to all things Escalade.

[VISUALIZE YOUR OWN](#)

[SUBSCRIBE TO UPDATES](#)