

COLORADO 2021



Colorado Crew Cab ZR2 in Sand Dune
Metallic with available ZR2 Dusk
Special Edition. Vehicle shown can
tow up to 5,000 lbs!

Professional driver. Closed course.

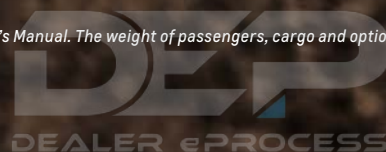


LIVE YOUR BIGGEST LIFE.

The 2021 Colorado is 100% Chevy truck. First of all, the grille and tailgate get distinct updates that provide a strong family resemblance. But it's so much more than that. If power is your preference, the available V6 offers 308 horsepower. And an available GM-exclusive Duramax® 2.8L Turbo-Diesel engine generates up to 7,700 lbs. of towing^{1,2} muscle with 369 lb.-ft. of torque. Are you ready to leave roads behind? Colorado ZR2 is the truck built specifically to dominate the off-road while still excelling on pavement. With Colorado, you can live life on your terms.

FIND NEW ROADS™

¹ Before you buy a vehicle or use it for trailering, carefully review the Trailering section of the Owner's Manual. The weight of passengers, cargo and options or accessories may reduce the amount you can tow. ² Requires Colorado Crew Cab Short Box LT 2WD with available Trailering Package, LT Convenience Package and Safety Package.



MODELS

WT

When the question is “Who’s ready to work?” the answer is Colorado WT.

You’ll get a full day out of the reliable 2.5L engine or the available 3.6L V6 engine¹ with 308 horsepower and 275 lb.-ft. of torque. The V6 is paired with an 8-speed automatic transmission.

Extended Cab models will accommodate your coworkers with dual rear seats, while Crew Cab models are ready for three passengers with a folding rear bench seat.



LT

You get all the work ethic you expect along with a huge step forward in style and comfort.

Body-color front and rear bumpers and 17-inch aluminum wheels add to the appeal. An EZ Lift power locking tailgate ups the ante on Colorado capability.

Comfort and convenience are elevated by a 6-way power driver seat, leather-wrapped steering wheel with audio controls and Chevrolet Infotainment 3 system² with 8-inch diagonal color touch-screen.



Vehicle shown with available options and Chevrolet Accessories³

¹ Standard on Crew Cab Long Box 2WD and Crew Cab 4x4 models. ² Chevrolet Infotainment System functionality varies by model. Full functionality requires compatible Bluetooth and smartphone, and USB connectivity for some devices.

³ Chevrolet Accessories are dealer-installed and covered by the GM 3-year/36,000-mile (whichever comes first) New Vehicle Limited Warranty when ordered with your new Colorado. See your dealer for details.

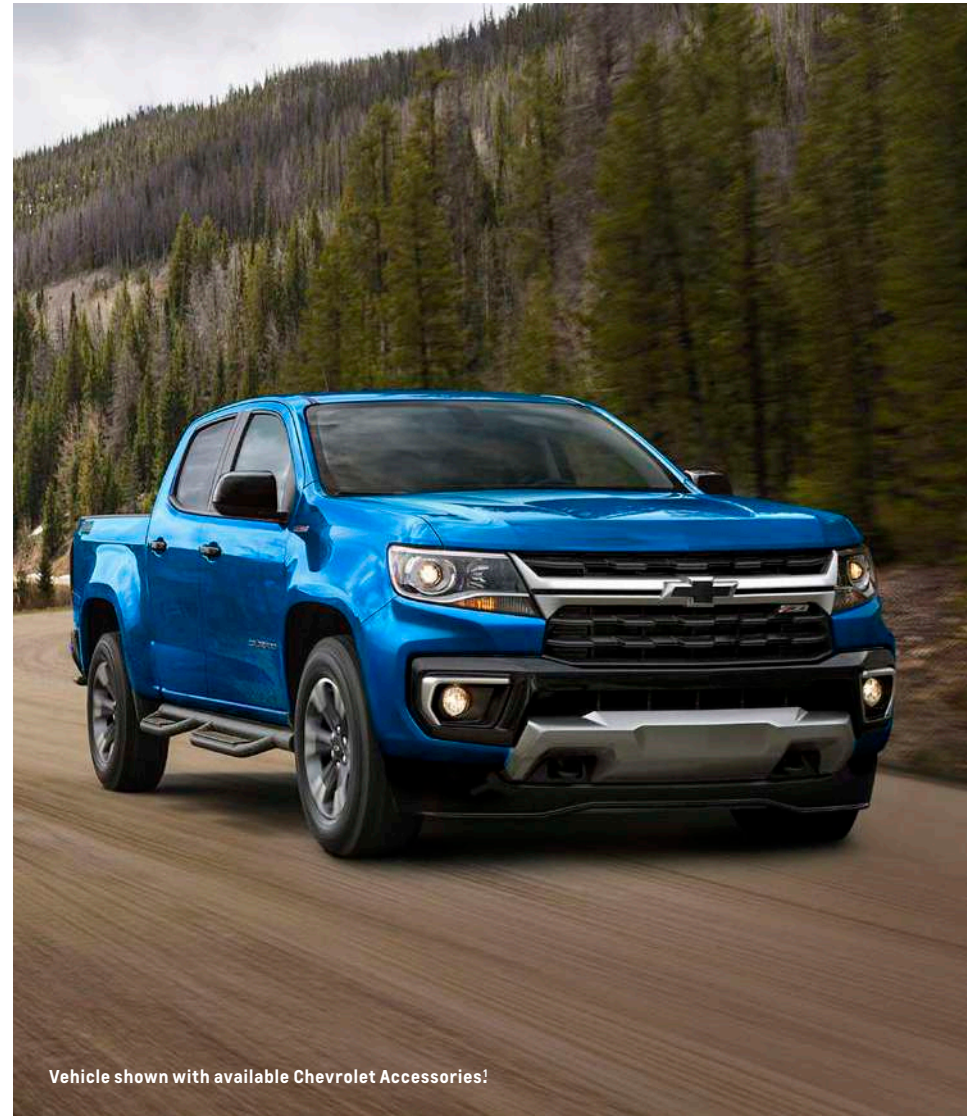
MODELS

Z71

This Colorado has an off-road attitude.

You'll have the confidence to tackle two-tracks with the Z71 Off-Road Suspension Package that includes an automatic locking rear differential. Projector-beam headlamps, fog lamps and 17-inch bright machined-aluminum wheels create a distinct look.

Step into Z71 for your choice of exclusive Jet Black cloth/leatherette or Jet Black leather-appointed seating that's durable and easy to clean.



Vehicle shown with available Chevrolet Accessories!

¹ Chevrolet Accessories are dealer-installed and covered by the GM 3-year/36,000-mile (whichever comes first) New Vehicle Limited Warranty when ordered with your new Colorado. See your dealer for details.



MODELS



ZR2

In ZR2, you're ready for a road-free day.

Tame the trails with front and rear electronic locking differentials and a Multimatic DSSV™ Damping System. The 308-horsepower 3.6L V6 engine supplies the power. There's also nearly 2 inches of front and rear lift straight from the factory, and a 3.5-inch wider stance than found on any other 2021 Colorado. Tubular rockers and skid plates help defend against damage.

The distinctive front fascia, grille and hood announce your arrival. And ZR2-specific Jet Black leather-appointed seating with embroidered head restraints provide you with an off-road oasis.



SPECIAL EDITIONS

ZR2 BISON

Where you're going, roads are an afterthought.

We took the ultimate off-road midsize pickup – Colorado ZR2 – and created Bison. Working with American Expedition Vehicles (AEV), we added AEV-designed fender flares and 17-inch wheels, along with AEV stamped steel front and rear bumpers.

Upping the off-road credentials are five hot-stamped boron steel skid plates, front winch provisions and rear recovery points. And don't forget the available AEV snorkel¹ that provides cool air for your hardworking engine. Adding to its rugged appearance are fog lamps and AEV logos on the head restraints and floor liners.



Vehicle shown with available accessories¹

¹ Non-GM warranty. See your dealer for limited warranty details.

SPECIAL EDITIONS

ZR2 DUSK

Any time of day, the available ZR2 Dusk Special Edition¹ makes a bold impression.

Form and function are guaranteed with 17-inch gloss Black-painted aluminum wheels, an off-road sport bar with ZR2 logo and off-road lights.



ZR2 MIDNIGHT

Good things happen in the dark.

With the available ZR2 Midnight Special Edition, you'll get the same 17-inch gloss Black-painted aluminum wheels, off-road sport bar with ZR2 logo and off-road lights as the Dusk Edition. But the fact that it's exclusively available with a Black exterior adds an attitude you'll only find on Midnight.



¹ Not available with Black exterior color.

SPECIAL EDITIONS

CUSTOM

Combining good looks and great value is what the Custom Edition is all about, with 18-inch Dark Argent Metallic-painted aluminum wheels and body-color grille bar, door handles, mirror caps and rear bumper. Plus the convenience of an available 4G LTE Wi-Fi® Hotspot! Available on WT.



Vehicle shown with available Chevrolet Accessories²

Z71 MIDNIGHT

The Z71 Midnight Edition embraces the darkness with 17-inch gloss Black-painted aluminum wheels and Goodyear Wrangler DuraTrac® tires. Bold Z71 front door badging, a spray-on bedliner and a premium all-weather floor liner are included. Available on Z71 in Black.



Vehicle shown with available Chevrolet Accessories²

¹ Service varies with conditions and location. Requires active service and paid AT&T data plan. Visit onstar.com for details and limitations. ² Chevrolet Accessories are dealer-installed and covered by the GM 3-year/36,000-mile (whichever comes first) New Vehicle Limited Warranty when ordered with your new Colorado. See your dealer for details.

SPECIAL EDITIONS

REDLINE

City streets provide the inspiration for the Redline Edition, including 18-inch Black-painted aluminum wheels with Red accents, Black Chevrolet bowtie emblem and Redline-specific badging. It continues with Black mirror caps, grille bar and door handles, off-road assist steps, Red recovery hooks¹ and a spray-on bedliner. Available on LT.



¹ To avoid the risk of injury, never use recovery hooks to tow a vehicle. See the Owner's Manual for more information. ² Chevrolet Accessories are dealer-installed and covered by the GM 3-year/36,000-mile (whichever comes first) New Vehicle Limited Warranty when ordered with your new Colorado. See your dealer for details.





A STRONG SHOWING.

For 2021, Colorado sends a powerful message whether it's coming or going. The new front fascia and grille will get you noticed, and the embossed tailgate will leave a lasting impression.



¹ Chevrolet Accessories are dealer-installed and covered by the GM 3-year/36,000-mile (whichever comes first) New Vehicle Limited Warranty when ordered with your new Colorado. See your dealer for details.

DEP
DEALER ePROCESS

Colorado Crew Cab Long Box LT 4x4
in Black with available Duramax 2.8L
Turbo-Diesel engine and available
Chevrolet Accessories!

Colorado Crew Cab Short Box Z71 4x4
in Crush (extra-cost color) with available
features and Chevrolet Accessories.¹

THERE'S ADVENTURE AROUND EVERY CORNER.



¹ Chevrolet Accessories are dealer-installed and covered by the GM 3-year/36,000-mile (whichever comes first) New Vehicle Limited Warranty when ordered with your new Colorado. See your dealer for details.

INTERIOR DESIGN

Colorado Crew Cab LT interior in Jet Black with available features.

IN YOUR ELEMENT.

- All seats are contoured for maximum support and leg room.
- Heated front seats and a heated steering wheel are standard on Z71 and ZR2 and available on LT.¹
- The front center floor console provides secure storage for your valuables. Crew Cab models feature a fold-down rear seat with hidden underseat storage.
- An available full-color multi-function Driver Information Center² provides critical data when you need it.

¹ Heated seats and steering wheel require available Luxury Package on LT. ² Standard on Z71 and ZR2.

DEP
DEALER ePROCESS

TECHNOLOGY

FEEL CONNECTED.

- The Chevrolet Infotainment 3 system¹ lets you arrange icons and features on the color touch-screen. Touch and swipe on the screen just like you do on your smartphone.
- Steering wheel-mounted controls² and Bluetooth® wireless technology³ give you access to features on your compatible phone.
- Two standard USB ports⁴, plus two more included on LT and above, allow for easy smartphone plug-in and charging.

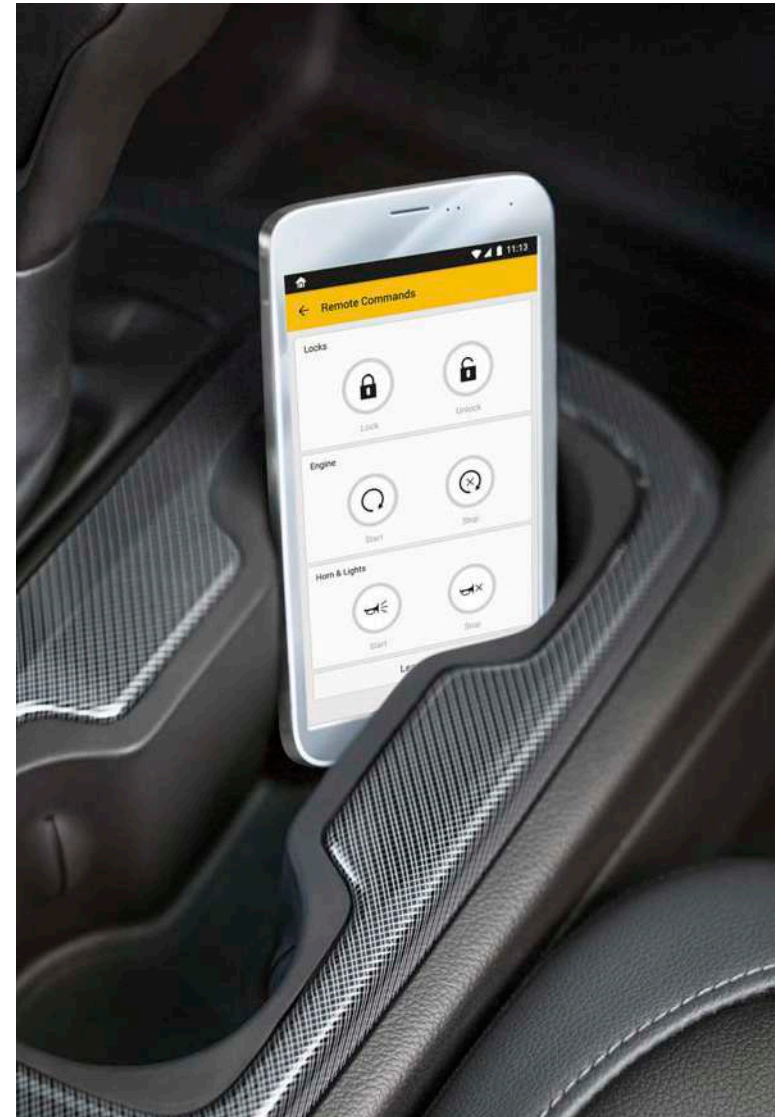
¹ Chevrolet Infotainment System functionality varies by model. Full functionality requires compatible Bluetooth and smartphone, and USB connectivity for some devices. ² Standard on LT, Z71 and ZR2. ³ Go to my.chevrolet.com/learnAbout/bluetooth to find out which phones are compatible with the vehicle. Full Bluetooth feature functionality varies by device, model and software version. ⁴ Not compatible with all devices.

DEALER ePROCESS

Apple CarPlay^{®1} integration for your iPhone[®] (shown) and Android Auto^{™2} compatibility.

Available 4G LTE Wi-Fi[®] Hotspot³ provides a fast and reliable connection for up to seven devices.

Available myChevrolet Mobile App⁴ includes remote vehicle start if properly equipped (requires paid plan).



¹ Vehicle user interface is a product of Apple and its terms and privacy statements apply. Requires compatible iPhone and data plan rates apply. ² Vehicle user interface is a product of Google and its terms and privacy statements apply. Requires the Android Auto app on Google Play and an Android compatible smartphone running Android 5.0 or higher. Data plan rates apply. ³ Service varies with conditions and location. Requires active service and paid AT&T data plan. Visit onstar.com for details and limitations. Availability subject to change. ⁴ Available on select Apple and Android devices. Service availability, features and functionality vary by vehicle, device and the plan you are enrolled in. User terms apply. Device data connection required. Visit onstar.com for details and limitations.

Apple CarPlay is a trademark of Apple Inc. Siri, iPhone and Apple Music are trademarks of Apple Inc., registered in the U.S. and other countries. Android Auto is a trademark of Google LLC.



AVAILABLE DURAMAX 2.8L TURBO-DIESEL.

- 30 MPG highway.¹
- 7,700 lbs. of maximum available towing.^{2,3}
- 1,480 lbs. of maximum payload.^{2,4}
- 181 horsepower and 369 lb.-ft. of torque.

¹ EPA-estimated MPG city/highway: Colorado 2WD with available Duramax 2.8L Turbo-Diesel engine 20/30. ² Requires Colorado Crew Cab Short Box LT 2WD with available Trailering Package, LT Convenience Package and Safety Package. ³ Before you buy a vehicle or use it for trailering, carefully review the Trailering section of the Owner's Manual. The weight of passengers, cargo and options or accessories may reduce the amount you can tow. ⁴ These maximum payload ratings are intended for comparison purposes only. Before you buy a vehicle or use it to haul people or cargo, carefully review the Vehicle Loading section of the Owner's Manual and check the carrying capacity of your specific vehicle on the label on the inside of the driver door jamb.



AVAILABLE 3.6L DOHC V6

- 25 MPG highway fuel economy¹
- 308 horsepower and 275 lb.-ft. of torque
- 7,000 lbs. of maximum available towing^{2,3}
- 1,550 lbs. of maximum payload^{4,5}
- Dual overhead cam (DOHC)
- Continuously Variable Valve Timing and Spark Ignition Direct Injection (SIDI)

2.5L 4-CYLINDER

- 25 MPG highway fuel economy⁶
- 200 horsepower and 191 lb.-ft. of torque
- 3,500 lbs. of maximum available towing^{2,7}
- 1,435 lbs. of maximum payload^{4,8}
- Dual overhead cam (DOHC)
- Continuously Variable Valve Timing and Spark Ignition Direct Injection (SIDI)



¹ EPA-estimated MPG city/highway: Colorado 2WD with available 3.6L V6 18/25. ² Before you buy a vehicle or use it for trailering, carefully review the Trailering section of the Owner's Manual. The weight of passengers, cargo and options or accessories may reduce the amount you can tow. ³ All models except ZR2. Requires available Trailering Package. ⁴ These maximum payload ratings are intended for comparison purposes only. Before you buy a vehicle or use it to haul people or cargo, carefully review the Vehicle Loading section of the Owner's Manual and check the carrying capacity of your specific vehicle on the label on the inside of the driver door jamb. ⁵ Requires Colorado Crew Cab Short Box WT 4x4. ⁶ EPA-estimated MPG city/highway: Colorado 2WD with 2.5L 4-cylinder engine 19/25. ⁷ Requires available aftermarket equipment. ⁸ Requires Colorado Extended Cab LT 2WD.

PERFORMANCE

Colorado Crew Cab Short Box Z71 in Crush (extra-cost color) with available Trailering Package.



100% CHEVY TRUCK.

The rugged fully boxed frame of Colorado provides maximum hauling capability. Strategic use of advanced high-strength steel reduces mass while reinforcing strength.

With a coil-over-shock front suspension, rear leaf springs, asymmetric rear shock placements and a wide track, Colorado is solid, smooth and capable.

Hitch Guidance¹ helps make lining up your hitch and trailer easy. Just shift into Reverse and press the Hitch Guidance button on the Rear Vision Camera¹ screen. A single guiding line appears on the screen to help you center the hitch ball and trailer coupler. Standard on ZR2 and available on models with Tow/Haul mode²

The Duramax Diesel in Colorado features a 4-valves-per-cylinder design that contributes to excellent performance. With an engine block made of durable cast iron, there's no doubt this engine was created specifically for trucks.

Electric Power Steering and Duralife[®] brake rotors deliver a confident drive. An automatic locking rear differential

is standard on Z71 and available on WT and LT. Driver-selectable full locking front and rear differentials are standard on ZR2.

Both the electronically controlled 6-speed and 8-speed automatic transmissions are equipped with Tow/Haul mode² and auto grade braking. See the Specifications section for transmission availability.

¹ Read the vehicle Owner's Manual for important feature limitations and information. ² Tow/Haul mode is included with available 3.6L V6 or Duramax 2.8L Turbo-Diesel engines.

DEP
DEALER ePROCESS

SAFETY IS ONE OF ITS GREATEST STRENGTHS.

Available Safety Package. This package, available on LT and Z71, includes Lane Departure Warning and Forward Collision Alert. LT also includes Rear Park Assist.



Lane Departure Warning. This feature can alert you if you might be unintentionally drifting out of detected lane lines so you can quickly take action. System alerts do not occur if you are using your turn signal or it detects that you may be intentionally leaving your lane. Available on LT and Z71 with Safety Package.



Forward Collision Alert. Can warn you if it detects a potential front-end collision with a vehicle you're following. It can also provide a tailgating alert if you're following much too closely. Available on LT and Z71 with Safety Package.



Rear Park Assist. Can provide distance alerts to nearby detected objects behind your vehicle to help you park and avoid collisions when traveling in Reverse at low speeds. Standard on Z71. Available on WT with WT Convenience Package and on LT with Safety Package.



Rear Vision Camera. This feature provides an image of the area directly behind your vehicle when traveling in Reverse at low speeds. Standard on all models.



StabiliTrak® Electronic Stability Control. This standard system detects the difference between the path being steered and the direction the vehicle is actually traveling. It then uses the brakes and, if necessary, adjusts propulsion torque to help you keep your Colorado on track.



Six airbags. Every Colorado offers six standard airbags¹ Sensors determine how many airbags deploy – including seat-mounted side-impact airbags for the driver and front passenger.



Teen Driver. Available Teen Driver technology helps encourage better driving habits by providing an in-vehicle report card that monitors the frequency of certain available safety technology feature activations, providing seat belt reminders including Buckle to Drive and muting the audio until front-seat occupants are buckled, and giving warnings when the vehicle is traveling over a predetermined speed.

High-strength steel safety cage. The ladder-type frame is made from 83% high-strength steel and ultra-high-strength steel for enhanced occupant protection and reduced mass.

Safety starts with you. Safety or driver assistance features are no substitute for the driver's responsibility to operate the vehicle in a safe manner. The driver should remain attentive to traffic, surroundings and road conditions at all times. Visibility, weather and road conditions may affect feature performance. Read the vehicle Owner's Manual for more important feature limitations and information.

¹ A NOTE ON CHILD SAFETY: Always use seat belts and the correct child restraint for your child's age and size, even with airbags. Even in vehicles equipped with the Passenger Sensing System, children are safer when properly secured in a rear seat in the appropriate infant, child or booster seat. Never place a rear-facing infant restraint in the front seat of any vehicle equipped with an active frontal airbag. See your vehicle Owner's Manual and the child safety seat instructions for more safety information.

Available features shown.



DEP
DEALER ePROCESS

TRUCK LEGENDS



When you've been building pickups for over 100 years, one thing you learn is there's a story behind every truck. And we want to hear yours. Chevy Truck Legends honors our dependable, long-lasting trucks and the people

who keep them going strong. If you own an eligible Chevy truck and have purchased or leased more than one new Chevy truck in your lifetime or have driven one over 100,000 miles, you're a legend. Go to chevytrucklegends.com

to find your eligible truck and discover the benefits that come with membership. Explore the galleries and read about the relationship owners have with their Chevy trucks.

DEP
DEALER ePROCESS

ACCESSORIES



Front and Rear Floor Liners available from Chevrolet Accessories.



Tonneau Cover available from Chevrolet Accessories.



Off-Road Assist Steps available from Chevrolet Accessories.



17" Gloss Black Aluminum Wheels¹ available from Chevrolet Accessories.

¹ Use only GM-approved wheel/tire combinations. See dealer for details.

EXTERIOR COLORS



Summit White



Satin Steel Metallic



Sand Dune Metallic¹



Cherry Red Tintcoat²



Crush²



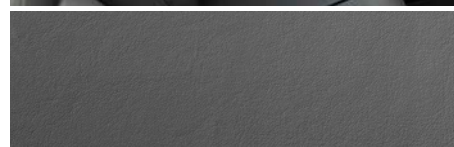
Bright Blue Metallic²



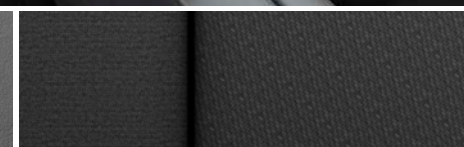
Black

¹ Not available on WT, LT or Z71. ² Extra-cost color.

MODELS



Dark Ash Vinyl (shown)



Dark Ash Cloth

WT Colorado WT includes these features:

MECHANICAL

Brakes – 4-wheel antilock, 4-wheel disc with Duralife rotors

Engine – 2.5L DOHC 4-cylinder with Variable Valve Timing (VVT) and Direct Injection

Engine – 3.6L DOHC V6 with Variable Valve Timing (VVT) and Direct Injection (Crew Cab 4x4 and Crew Cab Long Box 2WD models)

StabiliTrak – Electronic Stability Control System with Traction Control

Transfer case – 2-speed, electronic with rotary controls; includes Neutral position for dinghy towing (4x4 models)

Transmission – 6-speed automatic, electronically controlled with overdrive

Transmission – 8-speed automatic, electronically controlled with overdrive, Tow/Haul mode and Hitch Guidance¹ (Crew Cab 4x4 and Crew Cab Long Box 2WD models)

EXTERIOR

Bumper – rear, chrome with CornerStep

Cargo area lighting – integrated with center high-mounted stop lamp

Fuel filler – capless fueling (not available with Duramax 2.8L Turbo-Diesel engine)

Headlamps – halogen, automatic on/off with automatic delay and daytime running lamps

Mirrors – manual-adjustable, manual-folding with Black caps

Recovery hooks² – front (4x4 models)

Tire – compact spare

Tire – full-size spare, 255/65R17 all-season (included with 3.6L V6 engine)

Tires – 255/65R17 all-season



17" Ultra Silver Metallic-Painted Steel Wheels
Standard on WT



18" Dark Argent Metallic-Painted Aluminum Wheels
Available on WT with Custom Special Edition

¹ Read the vehicle Owner's Manual for important feature limitations and information. ² To avoid the risk of injury, never use recovery hooks to tow a vehicle. See the Owner's Manual for more information.

MODELS (CONTINUED)

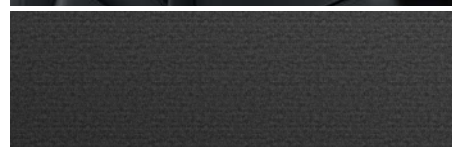
WT (CONTINUED) Colorado WT includes these features:

INTERIOR
Air conditioning – manual, single-zone
Audio – 6-speaker system
Console – front center floor
Door locks – power programmable with lockout protection and rear door child security
Driver Information Center – monochromatic display
Entertainment – Chevrolet Infotainment 3 system ¹ with 7-inch diagonal color touch-screen, AM/FM stereo, Bluetooth® audio streaming ² for two active devices, voice command pass-through to compatible phone, and Apple CarPlay ^{®3} and Android Auto™ ⁴ compatibility
Media – two USB ports ⁵ and auxiliary input jack in front center floor console
Rear Vision Camera ⁶
Seat – driver 4-way power adjuster with manual recline
Seat – rear folding bench (Crew Cab models)
Seats – dual rear with underseat storage (Extended Cab models)
SiriusXM ^{®7} – All Access Package with 3-month trial subscription
Steering column – manual tilt
Theft-deterrent system – engine immobilizer
Tire Pressure Monitoring System with Tire Fill Alert (does not monitor spare tire)
Visors – driver and front passenger, with passenger vanity mirror
Windows – power with driver express-up/-down, all others express-down

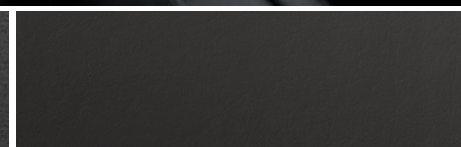
¹ Chevrolet Infotainment System functionality varies by model. Full functionality requires compatible Bluetooth and smartphone, and USB connectivity for some devices. ² Go to my.chevrolet.com/learnAbout/bluetooth to find out which phones are compatible with the vehicle. Full Bluetooth feature functionality varies by device, model and software version. ³ Vehicle user interface is a product of Apple and its terms and privacy statements apply. Requires compatible iPhone and data plan rates apply. ⁴ Vehicle user interface is a product of Google and its terms and privacy statements apply. Requires the Android Auto app on Google Play and an Android compatible smartphone running Android 5.0 or higher. Data plan rates apply. ⁵ Not compatible with all devices. ⁶ Read the vehicle Owner's Manual for important feature limitations and information. ⁷ If you decide to continue service after your trial, the subscription plan you choose will automatically renew thereafter and you will be charged according to your chosen payment method at then-current rates. Fees and taxes apply. See the SiriusXM Customer Agreement at siriusxm.com for complete terms and how to cancel. All fees, content, features and availability are subject to change.



MODELS (CONTINUED)



Jet Black Cloth



Jet Black Leather-Appointed Seating Surfaces⁶ (shown)

LT In addition to or replacing WT features, LT includes:

MECHANICAL

Transfer case – 2-speed, electronic Autotrac[®] with rotary controls; includes Neutral position for dinghy towing (4x4 models)

EXTERIOR

Bumper – rear, body-color with CornerStep

Mirrors – power-adjustable, manual-folding with body-color caps; includes driver spotter mirror

Tailgate – EZ Lift with power remote locking

INTERIOR

Console – overhead with sunglasses holder

Cruise control – electronic with Set and Resume Speed

Entertainment – Chevrolet Infotainment 3 system¹ with 8-inch diagonal color touch-screen, AM/FM stereo, Bluetooth[®] audio streaming² for two active devices, voice command pass-through to phone, and Apple CarPlay^{®3} and Android Auto^{™4} compatibility

Media – two USB ports⁵; charge-only, on rear of front center floor console

Mirror – rearview, auto-dimming

Remote Keyless Entry – extended-range

Seat – driver 6-way power adjuster

Steering column – manual tilt and telescopic

Steering wheel – leather-wrapped with mounted audio, cruise and phone controls

Theft-deterrent system – unauthorized entry

Visors – driver and front passenger, illuminated vanity mirrors



17" Blade Silver Metallic-Painted Aluminum Wheels
Standard on LT



18" Dark Argent Metallic-Painted Aluminum Wheels
Available on LT



18" Black-Painted Aluminum Wheels with Red Accents
Available on LT with Redline Edition

¹ Chevrolet Infotainment System functionality varies by model. Full functionality requires compatible Bluetooth and smartphone, and USB connectivity for some devices. ² Go to my.chevrolet.com/learnAbout/bluetooth to find out which phones are compatible with the vehicle. Full Bluetooth feature functionality varies by device, model and software version. ³ Vehicle user interface is a product of Apple and its terms and privacy statements apply. Requires compatible iPhone and data plan rates apply. ⁴ Vehicle user interface is a product of Google and its terms and privacy statements apply. Requires the Android Auto app on Google Play and an Android compatible smartphone running Android 5.0 or higher. Data plan rates apply. ⁵ Not compatible with all devices. ⁶ Available on Crew Cab models only. Requires available Luxury Package.

MODELS (CONTINUED)



Z71 In addition to or replacing LT features, Z71 includes:

MECHANICAL

Differential – automatic locking rear

Engine – 3.6L DOHC V6 with Variable Valve Timing (VVT) and Direct Injection

Hill Descent Control

Transfer case shield (4x4 models)

Transmission – 8-speed automatic, electronically controlled with overdrive, Tow/Haul mode and Hitch Guidance¹

Z71 Off-Road Suspension Package

EXTERIOR

Chevrolet bowtie emblem – Black

Headlamps – projector-beam

Fog lamps

Mirrors – heated, power-adjustable, manual-folding with Black caps; includes driver spotter mirror

Recovery hooks² – front

Tire – full-size spare, 255/65R17 all-season

Tires – 255/65R17 all-terrain

INTERIOR

Air conditioning – automatic, single-zone

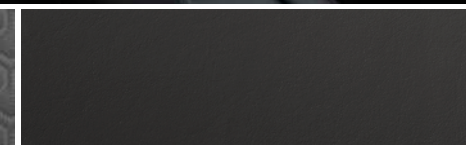
Driver Information Center – enhanced with multi-color display

Entertainment – Chevrolet Infotainment 3 Plus system³ with 8-inch diagonal HD color touch-screen, AM/FM stereo, HD Radio,⁴ Bluetooth[®] audio streaming⁴ for two active devices, Apple CarPlay^{®5} and Android Auto^{™6} compatibility, available Alexa Built-In,⁷ voice recognition and In-Vehicle Apps⁸

HD Rear Vision Camera¹



Jet Black Cloth/Leatherette



Jet Black Leather-Appointed Seating Surfaces¹⁰ (shown)



17" Bright Machined-Aluminum Wheels
Standard on Z71



17" Gloss Black-Painted Aluminum Wheels
Available on Z71 with Z71 Midnight Edition

INTERIOR (CONTINUED)

Remote vehicle starter system

Seats – heated driver and front passenger; driver power lumbar control

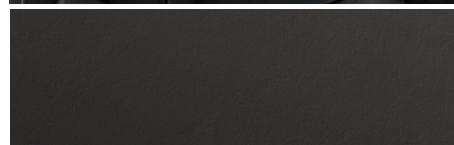
Steering wheel – heated

Wireless charging⁹

Window – sliding rear with defogger

¹ Read the vehicle Owner's Manual for important feature limitations and information. ² To avoid the risk of injury, never use recovery hooks to tow a vehicle. See the Owner's Manual for more information. ³ Chevrolet Infotainment System functionality varies by model. Full functionality requires compatible Bluetooth and smartphone, and USB connectivity for some devices. ⁴ Go to my.chevrolet.com/learnAbout/bluetooth to find out which phones are compatible with the vehicle. Full Bluetooth feature functionality varies by device, model and software version. ⁵ Vehicle user interface is a product of Apple and its terms and privacy statements apply. Requires compatible iPhone and data plan rates apply. ⁶ Vehicle user interface is a product of Google and its terms and privacy statements apply. Requires the Android Auto app on Google Play and an Android compatible smartphone running Android 5.0 or higher. Data plan rates apply. ⁷ Functionality is subject to limitations and varies by vehicle, infotainment system and location. Select service plan required. Certain Alexa Skills require account linking to use. Visit onstar.com for additional details. ⁸ Requires active service plan and paid AT&T vehicle data plan or compatible device with 3G/4G LTE tethering data plan. Visit onstar.com for details and limitations. ⁹ The system wirelessly charges one compatible mobile device. Some phones have built-in wireless charging technology and others require a special adaptor/back cover. To check for phone or other device compatibility, see my.chevrolet.com/learn or consult your carrier. ¹⁰ Extra-cost interior. Available on Crew Cab models only.

MODELS (CONTINUED)



Jet Black Leather-Appointed Seating Surfaces

ZR2 In addition to or replacing Z71 features, ZR2 includes:

MECHANICAL

Differential – full locking front and rear, driver selectable

Suspension – Multimatic DSSV™ Damping System

Trailer brake controller – integrated

Trailer Package – trailer hitch and 7-pin connector

EXTERIOR

Bedliner – Black spray-on with ZR2 logo

Bumper – rear, Black

Mirrors – heated, power-adjustable, manual-folding with body-color caps; includes driver spotter mirror

Off-road rocker protection

Recovery hooks¹ – Red

Tires – 265/65R17 Goodyear Wrangler DuraTrac® all-terrain

ZR2 enhancements – Off-Road Appearance Package, front and rear wheel flares, unique hood and fascia, and Chevrolet lettered grille with flowtie emblem

INTERIOR

Seat – front passenger 4-way power adjuster and power lumbar control



17" Graphite and Oxide Gold Aluminum Wheels
Standard on ZR2



17" AEV-Designed Dark Graphite Aluminum Wheels
Available on ZR2 with ZR2 Bison Edition



17" Gloss Black-Painted Aluminum Wheels
Available on ZR2 with ZR2 Dusk Special Edition
or ZR2 Midnight Special Edition

¹ To avoid the risk of injury, never use recovery hooks to tow a vehicle. See the Owner's Manual for more information.

SPECIFICATIONS

● STANDARD ○ AVAILABLE – NOT AVAILABLE

	WT	LT	Z71	ZR2
EXTERIOR				
Bedliner: Black spray-on with Chevrolet logo; ZR2 includes ZR2 logo	○	○	○	●
Bumper: Rear, chrome with CornerStep (requires available Chrome Appearance Package on LT)	●	○	–	–
Rear, body-color with CornerStep (requires available Custom Special Edition on WT)	○	○	●	–
Rear, Black	–	–	–	●
Door handles: Black (requires available Redline Edition on LT)	●	○	–	–
Body-color (requires available Custom Special Edition on WT)	○	●	●	●
Chrome (requires available Chrome Appearance Package)	–	○	–	–
Fog lamps (requires available LT Convenience Package on LT; requires available ZR2 Bison Edition on ZR2)	–	○	●	○
Mirrors: Manual-adjustable, manual-folding	●	–	–	–
Power-adjustable, manual-folding (requires available Custom Special Edition on WT)	○	●	–	–
Heated, power-adjustable, manual-folding (requires available LT Convenience Package on LT)	–	○	●	●
Black caps (requires available Redline Edition on LT)	●	○	●	–
Body-color caps (requires available Custom Special Edition on WT)	○	●	–	●
Chrome caps (requires available Chrome Appearance Package)	–	○	–	–
Driver spotter mirror (requires available Custom Special Edition on WT)	○	●	●	●
Recovery hooks: ¹ Front (standard on WT and LT 4x4 models)	●	●	●	–
Red, front (requires available Redline Edition on LT)	–	○	○	●
Tailgate: Locking	●	–	–	–
EZ Lift with power lock and release (requires available WT Convenience Package on WT)	○	●	●	●
ENGINE/CHASSIS				
Differential: Automatic locking rear (standard on Crew Cab Long Box WT and LT; available with 2.5L 4-cylinder engine or 3.6L V6 engine on Extended Cab and Crew Cab Short Box WT and LT; required with 2.8L Turbo-Diesel engine on Crew Cab Short Box LT; requires available Trailering Package on WT and LT)	○	○	●	–
Driver-selectable full locking front and rear	–	–	–	●
Engine: 2.5L DOHC 4-cylinder with Variable Valve Timing (VVT) and Direct Injection; 200 hp @ 6300 rpm, 191 lb.-ft. of torque @ 4400 rpm (standard on Crew Cab Short Box 2WD and Extended Cab models)	●	●	–	–
3.6L DOHC V6 with Variable Valve Timing (VVT) and Direct Injection; 308 hp @ 6800 rpm, 275 lb.-ft. of torque @ 4000 rpm (standard on Crew Cab WT and LT 4x4 and Crew Cab Long Box WT and LT 2WD models)	○	○	●	●
Duramax 2.8L Turbo-Diesel DOHC 4-cylinder with Common Rail Direct Injection; 181 hp @ 3400 rpm, 369 lb.-ft. of torque @ 2000 rpm; includes Diesel Exhaust Brake and integrated trailer brake controller (Crew Cab models only; LT requires available Safety Package, LT Convenience Package and Trailering Package; LT 2WD also requires Short Box; Z71 requires available 4x4, Safety Package and Trailering Package)	–	○	○	–
Duramax 2.8L Turbo-Diesel DOHC 4-cylinder with Common Rail Direct Injection; 186 hp @ 3400 rpm, 369 lb.-ft. of torque @ 2000 rpm; includes Diesel Exhaust Brake and integrated trailer brake controller	–	–	–	○
Steering: Rack-and-pinion with Electric Power Steering (EPS) assist	●	●	●	●

	WT	LT	Z71	ZR2
ENGINE/CHASSIS (CONTINUED)				
Trailer brake controller: Integrated (included with available 2.8L Turbo-Diesel engine; requires available Trailering Package with 3.6L V6 engine)	○	○	○	●
Transfer case: Electric, 2-speed (4x4 models)	●	–	–	–
Electric, 2-speed, Autotrac (4x4 models)	○	●	●	●
Transmission: 6-speed automatic, electronically controlled with overdrive (included with 2.5L DOHC 4-cylinder engine and available 2.8L Turbo-Diesel engine)	●	●	○	○
8-speed automatic, electronically controlled with overdrive (included with 3.6L DOHC V6 engine)	○	○	●	●
Tow/Haul mode: Includes Hitch Guidance ² with dynamic trailering assist guideline (standard on Crew Cab Long Box WT and LT; available with 3.6L V6 engine on Extended Cab and Crew Cab Short Box WT and LT; available with 2.8L Turbo-Diesel engine on Extended Cab and Crew Cab Short Box LT)	○	○	●	●
SAFETY & SECURITY				
Airbags: ³ Frontal airbags for driver and front passenger; seat-mounted side-impact airbags for driver and front passenger; head-curtain airbags for front and rear outboard seating positions; includes front Passenger Sensing System for frontal passenger airbag	●	●	●	●
Forward Collision Alert ² (requires available Safety Package)	–	○	○	–
Lane Departure Warning ² (requires available Safety Package)	–	○	○	–
Rear Park Assist ² (requires available WT Convenience Package on WT; requires available Safety Package on LT)	○	○	●	–
Rear Vision Camera ²	●	●	–	–
HD Rear Vision Camera ² (requires available Chevrolet Infotainment 3 Plus system ⁴ with Navigation ⁵ on LT)	–	○	●	●
Teen Driver technology	●	●	●	●
Theft-deterrent system: Unauthorized entry (requires available WT Convenience Package on WT)	○	●	●	●
Up to 3 months of OnStar Safety & Security coverage ⁶ which includes Automatic Crash Response, Stolen Vehicle Assistance, Emergency Services, Crisis Assist, Roadside Assistance and Turn-by-Turn Navigation ⁷	○	●	●	●
INTERIOR				
Air conditioning: Manual, single-zone	●	●	–	–
Automatic, single-zone (requires available Luxury Package on LT)	–	○	●	●
Cruise control: Electronic with Set and Resume Speed (requires available WT Convenience Package on WT)	○	●	●	●
Floor covering: Front and rear carpeted floor mats	●	●	●	●
Black vinyl (deletes front and rear carpeted floor mats on WT and ZR2; not available with ZR2 Bison Edition on ZR2)	○	–	–	○
Remote Keyless Entry: Extended-range (requires available WT Convenience Package on WT)	○	●	●	●
Remote vehicle starter system (requires available LT Convenience Package on LT)	–	○	●	●
Steering wheel: Heated (requires available heated front seats or Luxury Package on LT)	–	○	●	●
Window: Sliding rear with defogger (requires available LT Convenience Package on LT)	–	○	●	●

¹ To avoid the risk of injury, never use recovery hooks to tow a vehicle. See the Owner's Manual for more information. ² Read the vehicle Owner's Manual for important feature limitations and information. ³ A NOTE ON CHILD SAFETY: Always use seat belts and the correct child restraint for your child's age and size, even with airbags. Even in vehicles equipped with the Passenger Sensing System, children are safer when properly secured in a rear seat in the appropriate infant, child or booster seat. Never place a rear-facing infant restraint in the front seat of any vehicle equipped with an active frontal airbag. See your vehicle Owner's Manual and the child safety seat instructions for more safety information. ⁴ Chevrolet Infotainment System functionality varies by model. Full functionality requires compatible Bluetooth and smartphone, and USB connectivity for some devices. ⁵ Map coverage available in the United States, Puerto Rico and Canada. ⁶ When you select a monthly plan within 30 days of activating your 1-month trial, you'll receive the first 2 months of the plan you select at no additional charge when you associate an approved payment method on file to your account and authorize recurring payments for your service plan. The amount and frequency of each recurring payment is based upon the service(s) and payment interval(s) you select from the options provided. After the trial expires, OnStar will automatically bill your payment method monthly at then-current standard monthly rates. Plans containing 4G LTE data will be billed every 30 days by AT&T. You may cancel at any time by pushing your blue OnStar button or calling 1-888-466-7827. May not be combined with other offers or retroactively applied. Offer subject to change. ⁷ Advisor-based Turn-by-Turn Navigation is subject to User Terms and limitations, and varies by vehicle model. Map coverage available in the United States, Puerto Rico and Canada.

SPECIFICATIONS (CONTINUED)

● STANDARD ○ AVAILABLE – NOT AVAILABLE

	WT	LT	Z71	ZR2
SEATING				
Seats: Front bucket	●	●	●	●
Dual rear with underseat storage (Extended Cab)	●	●	●	●
Rear manual-folding bench (Crew Cab)	●	●	●	●
Seat: Driver 4-way manual adjuster	●	–	–	–
Driver 6-way power adjuster	–	●	●	●
Front passenger 4-way power adjuster with power lumbar control	–	–	–	●
Driver power lumbar control (requires available heated front seats or Luxury Package on LT)	–	○	●	●
Heated driver and front passenger seats; includes driver power lumbar control and heated steering wheel (requires available LT Convenience Package on LT)	–	○	●	●
ENTERTAINMENT				
Chevrolet Infotainment 3 system ¹ with 7-inch diagonal color touch-screen, AM/FM stereo, Bluetooth [®] audio streaming ² for two active devices, voice command pass-through to compatible phone, and Apple CarPlay [®] and Android Auto [®] compatibility	●	–	–	–
Chevrolet Infotainment 3 system ¹ with 8-inch diagonal color touch-screen, includes features listed above	–	●	–	–
Chevrolet Infotainment 3 Plus system ¹ with 8-inch diagonal HD color touch-screen, includes features listed above, HD Radio [®] , available Alexa Built-In ⁵ , voice recognition and In-Vehicle Apps ⁶	–	–	●	●
Chevrolet Infotainment 3 Plus system ¹ with Navigation ⁷ ; includes features listed above for Plus system, SD card reader, enhanced voice recognition, additional memory for In-Vehicle Apps ⁶ and Connected Navigation ⁸ ; includes Bose premium 7-speaker sound system; LT includes HD Rear Vision Camera ⁹ and enhanced multi-color Driver Information Center	–	○	○	○
Audio system: 6-speaker	●	●	●	●
Bose premium 7-speaker sound system (requires available Chevrolet Infotainment 3 Plus system ¹ with Navigation ⁷)	–	○	○	○
Media: Two USB ports ¹⁰ and auxiliary input jack in front center floor console	●	●	●	●
Two USB ports ¹⁰ , charge-only, on rear of front center floor console	–	●	●	●
SiriusXM [®] 11 – All-Access Package with 3-month trial subscription	●	●	●	●
Available 4G LTE Wi-Fi [®] Hotspot ¹² for up to seven devices, includes 1 month or 3 GB of data (whichever comes first) (requires available OnStar on WT)	○	●	●	●
Chevrolet Connected Access ¹³ with 10 years of standard connectivity, which currently enables features such as Vehicle Diagnostics and Dealer Maintenance Notification (requires available OnStar on WT)	○	●	●	●
PACKAGES AND SPECIAL EDITIONS				
Trailering Package	○	○	○	●
Heavy-duty, includes trailer hitch and 7-pin connector (standard on Crew Cab Long Box models; requires available 3.6L V6 engine and automatic locking rear differential on WT and LT; requires available 2.8L Turbo-Diesel engine on LT)				

	WT	LT	Z71	ZR2
PACKAGES AND SPECIAL EDITIONS (CONTINUED)				
Custom Special Edition	○	–	–	–
18" Dark Argent Metallic-painted aluminum wheels, 265/60R18 all-season tires, body-color center grille bar, rear bumper, door handles and mirror caps, and outside rearview mirror with driver spotter mirror				
WT Convenience Package	○	–	–	–
Remote Keyless Entry, theft-deterrent system with unauthorized entry, cruise control and EZ Lift tailgate with power lock and release				
Chrome Appearance Package	–	○	–	–
Chrome grille, heated power-adjustable manual-folding mirrors with chrome caps, chrome door handles, chrome beltline moldings and chrome rear bumper				
LT Convenience Package	–	○	–	–
Fog lamps, heated power-adjustable body-color mirrors, remote vehicle starter system and sliding rear window with defogger				
Luxury Package	–	○	–	–
Projector-beam headlamps, driver power lumbar control, heated driver and front passenger seats, heated steering wheel and single-zone automatic climate control (Crew Cab models only; requires available LT Convenience Package and leather-appointed seating surfaces)				
Redline Edition	–	○	–	–
18" Black-painted aluminum wheels with Red accents, Black bowtie emblem, Black grille, 3-inch round Black off-road assist steps, Black Out Exterior Trim Package, Red Tipping decal on outside rearview mirrors, Black spray-on bedliner and Red recovery hooks ¹⁴ (requires Jet Black interior color; available with Summit White, Satin Steel Metallic or Black exterior colors)				
Safety Package	–	○	○	–
Forward Collision Alert ⁹ and Lane Departure Warning ⁹ ; includes Rear Park Assist ⁹ on LT				
Z71 Midnight Edition	–	–	○	–
Black exterior color, 17" gloss Black-painted aluminum wheels, Goodyear Wrangler DuraTrac [®] tires, Z71 door emblem, Black spray-on bedliner, and all-weather floor liner with Chevrolet logo				
ZR2 Bison Edition	–	–	–	○
17" AEV-designed aluminum wheels and spare wheel, AEV front bumper with winch provisions and AEV rear bumper with recovery points, AEV hot-stamped boron steel skid plates for front differential, engine oil pan, transfer case, fuel tank and rear differential, AEV fender flares, fog lamps, front and rear floor liners with AEV logo, and AEV embroidered head restraints (available with Summit White, Satin Steel Metallic, Sand Dune Metallic, Crush or Black exterior colors)				
ZR2 Dusk Special Edition	–	–	–	○
17" gloss Black-painted aluminum wheels and spare wheel, off-road lights, and sport bar with ZR2 logo				
ZR2 Midnight Special Edition	–	–	–	○
Black exterior color, 17" gloss Black-painted aluminum wheels and spare wheel, off-road lights, and sport bar with ZR2 logo				

¹ Chevrolet Infotainment System functionality varies by model. Full functionality requires compatible Bluetooth and smartphone, and USB connectivity for some devices. ² Go to my.chevrolet.com/learnAbout/bluetooth to find out which phones are compatible with the vehicle. Full Bluetooth feature functionality varies by device, model and software version. ³ Vehicle user interface is a product of Apple and its terms and privacy statements apply. Requires compatible iPhone and data plan rates apply. ⁴ Vehicle user interface is a product of Google and its terms and privacy statements apply. Requires the Android Auto app on Google Play and an Android compatible smartphone running Android 5.0 or higher. Data plan rates apply. ⁵ Functionality is subject to limitations and varies by vehicle, infotainment system and location. Select service plan required. Certain Alexa Skills require account linking to use. Visit onstar.com for additional details. ⁶ Requires active service plan and paid AT&T vehicle data plan or compatible device with 3G/4G LTE tethering data plan. Visit onstar.com for details and limitations. ⁷ Map coverage available in the United States, Puerto Rico and Canada. ⁸ Connected Navigation and Real-time Points of Interest (POI) only available on properly equipped vehicles. Requires paid plan or trial. Map coverage available in the United States, Puerto Rico and Canada. Visit onstar.com for details and limitations. ⁹ Read the vehicle Owner's Manual for important feature limitations and information. ¹⁰ Not compatible with all devices. ¹¹ If you decide to continue service after your trial, the subscription plan you choose will automatically renew thereafter and you will be charged according to your chosen payment method at then-current rates. Fees and taxes apply. See the SiriusXM Customer Agreement at siriusxm.com for complete terms and how to cancel. All fees, content, features and availability are subject to change. ¹² Service varies with conditions and location. Requires active service and paid AT&T data plan. Visit onstar.com for details and limitations. Availability subject to change. ¹³ Standard connectivity available only to original purchaser for 10 years. Services enabled by Connected Access are subject to change. Does not include emergency or security services. Diagnostic capabilities vary by model and service plan. Message and data rates may apply. Requires contact method on file and enrollment to receive alerts. Not all issues will deliver alerts. Visit onstar.com for details and limitations. ¹⁴ To avoid the risk of injury, never use recovery hooks to tow a vehicle. See the Owner's Manual for more information.

DIMENSIONS

	EXTENDED CAB	CREW CAB
Length	212.7" 212.4" (ZR2)	212.7" (Short Box), 224.9" (Long Box)
Wheelbase	128.3" 128.5" (ZR2)	128.3" (Short Box), 140.5" (Long Box) 128.5" (ZR2)
Height	70.4" (2WD) 70.3" (4x4) 72.4" (ZR2)	70.7" (Short Box 2WD), 70.6" (Long Box 2WD) 70.6" (Short Box 4x4), 70.5" (Long Box 4x4) 72.5" (ZR2)

	EXTENDED CAB	CREW CAB
Width	74.3" 76.7" (ZR2)	74.3" 76.7" (ZR2)
Front Track	62.4" 65.9" (ZR2)	62.4" 65.9" (ZR2)
Rear Track	62.4" 65.9" (ZR2)	62.4" 65.9" (ZR2)

	EXTENDED CAB	CREW CAB
Head Room (front/rear)	41.4"/36.7"	41.4"/38.3"
Leg Room (front/rear)	45.0"/28.6"	45.0"/35.8"
Shoulder Room (front/rear)	57.5"/57.3"	57.5"/56.2"

MAXIMUM CAPACITIES

Fuel tank (approximate)	21 gallons
Maximum trailering ¹	7,700 lbs.
Maximum payload ²	1,550 lbs.
Seating	Seats 2 (Extended Cab WT with rear seat delete) Seats 4 (Extended Cab WT, LT, Z71 and ZR2) Seats 5 (Crew Cab WT, LT, Z71 and ZR2)

	SHORT BOX	LONG BOX
Cargo volume ³	41.3 cu. ft.	49.9 cu. ft.
Inside width at floor	57.8"	57.8"
Box length at floor	61.7"	74.0"

EPA-ESTIMATED FUEL ECONOMY

2.5L 4-cylinder (2WD)	19 MPG city/25 highway/22 combined
2.5L 4-cylinder (4x4)	19 MPG city/24 highway/21 combined
3.6L V6 (2WD)	18 MPG city/25 highway/21 combined
3.6L V6 (4x4)	17 MPG city/24 highway/19 combined 16 MPG city/18 highway/17 combined (ZR2)
2.8L Turbo-Diesel (2WD)	20 MPG city/30 highway/23 combined
2.8L Turbo-Diesel (4x4)	19 MPG city/28 highway/22 combined 18 MPG city/22 highway/19 combined (ZR2)

¹ Requires Colorado Crew Cab 2WD with available Duramax 2.8L Turbo-Diesel 4-cylinder engine and Trailing Package. Before you buy a vehicle or use it for trailering, carefully review the Trailing section of the Owner's Manual. The weight of passengers, cargo and options or accessories may reduce the amount you can tow. ² Requires Colorado Crew Cab Short Box WT 4x4. These maximum payload ratings are intended for comparison purposes only. Before you buy a vehicle or use it to haul people or cargo, carefully review the Vehicle Loading section of the Owner's Manual and check the carrying capacity of your specific vehicle on the label on the inside of the driver door jamb. ³ Cargo and load capacity limited by weight and distribution.





Enroll. It's quick, it's easy and there is no cost to join. You will automatically receive points just for enrolling!¹ To enroll, visit mychevroletrewards.com.

Earn. Earn points on eligible new vehicle leases or purchases, which can be redeemed toward accessories², vehicle service and more. Plus, get points for paid service³, select OnStar[®] and Connected Services plans⁴, and many others.

Enjoy. Use points toward eligible accessories², paid service, eligible new vehicles⁵ and more. It's our way of saying thanks!



First oil change is covered⁹ Experience Chevrolet Complete Care, a comprehensive coverage, limited warranty and protection program that comes standard with every new 2021 Chevrolet Colorado lease and purchase.

Simply, it is designed around you, to make it easy to help keep your Chevrolet like new — and give you the confidence you deserve. For more information, visit chevrolet.com/complete-care.

NEW VEHICLE LIMITED WARRANTY

Chevrolet will warrant each 2021 Colorado with:

3-year/36,000-mile⁷ Bumper-to-Bumper Limited Warranty.

6 years/100,000 miles⁷ of Rust-Through Protection.

5-year/60,000-mile⁷ Powertrain Limited Warranty.

5 years/60,000 miles⁷ of Roadside Assistance⁸ and Courtesy Transportation.

¹ Must be 18 years or older. Points may be earned and redeemed only at participating GM entities, dealers or third party retailers in the United States (excluding Puerto Rico, the U.S. Virgin Islands or Guam). Points are not earned on taxes or certain fees, and expire 5 years from when points are earned. Some restrictions apply. For more information, please view full program Terms & Conditions. ² Members may use the voucher on eligible Chevrolet, Buick, GMC and Cadillac Accessories purchased through a participating dealership. Voucher must be used by expiration date noted. Any unused amount of the voucher will be forfeited. ³ Excludes taxes, fees and body shop repair orders. It could take up to 15 days for points to post to your account. ⁴ Connected vehicle services vary by vehicle model and require working electrical system, cell reception and GPS signal. Requires active service plan. OnStar links to emergency services. Visit onstar.com for details and limitations. ⁵ Not compatible with some other offers, including the GM Employee Discount programs. Excludes 2020 Chevrolet Corvette. Dealer contribution may affect final consumer cost. ⁶ Maintenance visit must occur within first year of vehicle delivery. Service visit consists of ACDelco dexos1™ Full Synthetic Oil and Filter Change/Tire Rotation/MPVI. Does not include air filters. See participating dealer for other restrictions and complete details. ⁷ Whichever comes first. See dealer for details. ⁸ Roadside service provided by Allstate Roadside Services. Limitations apply.



IMPORTANT INFORMATION

Chevrolet Owner Center (my.chevrolet.com). Everything you need to know. Anything you need to do. Your Chevrolet Owner Center makes it easy. Create your account today to get the most out of your new vehicle. Get special alerts and offers, schedule service, review your maintenance schedule, and view how-to videos specifically for your vehicle. All online, anytime. Visit the Owner Center today to register or take a tour.

Engines. Chevrolet products are equipped with engines produced by GM Global Propulsion Systems or other suppliers to GM worldwide. The engines in Chevrolet products may also be used in other GM makes and models.

Assembly. Chevrolet vehicles and their components are assembled or produced by different operating units of General Motors, its subsidiaries or suppliers to GM worldwide. We sometimes find it necessary to produce Chevrolet vehicles with different or differently sourced components than originally scheduled. Since some options may be unavailable when your vehicle is assembled, we suggest you verify that your vehicle includes the equipment you ordered and that, if there were changes, they are acceptable to you.

Chevrolet Connected Services and OnStar. Connected vehicle services vary by vehicle model and require an active service plan, working electrical system, cell reception and GPS signal. OnStar links to emergency services. Visit onstar.com for details and limitations.

A note on child safety. Always use seat belts and the correct child restraint for your child's age and size, even with airbags. Even in vehicles equipped with the Passenger Sensing System, children are safer when properly secured in a rear seat in the appropriate infant, child or booster seat. Never place a rear-facing infant restraint in the front seat of any vehicle equipped with an active frontal airbag. See your vehicle Owner's Manual and the child safety seat instructions for more safety information.

Important words about this catalog. We have tried to make this catalog comprehensive and factual. We reserve the right, however, to make changes at any time, without notice, in prices, colors, materials, equipment, specifications, models and availability. Specifications, dimensions, measurements, ratings and other numbers in this catalog

and other printed materials provided at the dealership or affixed to vehicles are approximations based on design and engineering drawings, prototypes and laboratory tests. Your vehicle may differ due to variations in manufacture and equipment. Since some information may have been updated since the time of printing, please check with your Chevrolet dealer for complete details. Chevrolet reserves the right to lengthen or shorten the model year for any product for any reason or to start and end model years at different times. Certain vehicle features may lose their usefulness over time due to obsolescence from technological changes. Unless otherwise noted, all claims based on GM Midsize Pickup segment and latest available competitive information. Excludes other GM vehicles.

Fleet orders. Some standard content may be deleted on fleet orders. See dealer for details.

Chevrolet ownership experience. Chevrolet is committed to enhancing the vehicle shopping and ownership experience through a wide array of programs. Visit chevrolet.com to build and price, find a vehicle, request a quote, compare vehicles, find financial tools or track your vehicle order. You'll also find information about 24-hour Roadside Assistance, Courtesy Transportation, Customer Assistance, GM Mobility, safety and current incentives.

Chevrolet.com/safety. Chevrolet is committed to helping keep you and your family safe – from the start of your journey to your destination. That's why Chevrolet vehicles offer standard and available safety and security features to help give you peace of mind.

GMmobility.com (1-800-323-9935). GM MobilitySM offers financial assistance for eligible adaptive equipment to make automotive travel easier for persons with disabilities or special transportation needs. To learn more about special GM Mobility offers, visit gmmobility.com.

The BuyPower Card. The Chevrolet BuyPower Card – Every purchase you make with the BuyPower Card from Capital One* helps you earn toward an eligible new Chevrolet, Buick, GMC or Cadillac vehicle. There's no limit on the amount you can earn or redeem, and your Earnings don't expire. Visit chevroletbuypowercard.com/catalogs.

* Capital One, N.A. is the issuer of the BuyPower Card. General Motors ("GM") is responsible for the operation and administration of the Earnings program.



GM, the GM logo, Chevrolet, the Chevrolet logo, and the slogans, emblems, vehicle model names, vehicle body designs and other marks appearing in this catalog are the trademarks and/or service marks of General Motors, its subsidiaries, affiliates or licensors. ©2020 OnStar LLC. All rights reserved. Sirius, XM, SiriusXM and all related marks and logos are trademarks of Sirius XM Radio Inc. Amazon, Alexa and all related marks are trademarks of Amazon.com, Inc. or its affiliates. The Bluetooth word mark is a registered trademark owned by Bluetooth SIG, Inc., and any use of such mark by Chevrolet is under license. Bose is a registered trademark of the Bose Corp. Goodyear and Wrangler DuraTrac are registered trademarks of The Goodyear Tire & Rubber Company.

©2020 General Motors. All rights reserved. September 2020



FIND NEW ROADS™

CHEVROLET.COM

